



T562 GB2 TELEPHONE

USER MANUAL



INTRODUCTION

First and foremost we would like to thank you for purchasing this product.

Our commitment to satisfying our customers can be seen from our ISO-9001 certification and from the manufacturing of products like this one.

Its advanced technology and exacting quality control will ensure that customers and users enjoy the many features this system offers. To obtain the maximum benefit from these features and a properly wired installation, we kindly recommend that you spend a few minutes of your time reading this manual.


INDEX

Introduction	2
Index.....	2
Safety precautions.....	2
Characteristics.....	2
System operation.....	3
Monitor description.....	
Description.....	3
Function push buttons.....	3
Connection terminals.....	3
Call volume control.....	3
Configuration dip switch.....	4
Setting address codes for the telephone.....	4-5
"Doctor mode" function.....	5
Intercom function.....	5
Activation light function (stairs light).....	5
Setting the ring tones.....	6
Installing the telephone.....	7
Installation diagrams.....	8
Notes.....	9





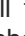


SAFETY PRECAUTIONS

- Install or modify the equipment **without the power connected**.
- The installation and handling of these equipments must be performed by **authorised personnel**.
- The entire installation must be at least **40cm** away from any other **installation**.
- Do not overtighten the screws on the terminal block.
- Install the telephone in a dry and protected place without risk of drop or water projections.
- Avoid to place it near to heating sources, in dusty locations or smoky environments.
- Before connecting the system to the mains, check the connections between door panel, power supply and telephones.
- Do always follow the enclosed information.

CHARACTERISTICS

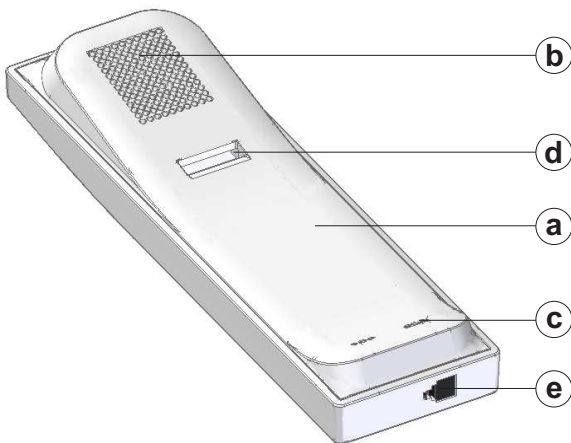
- Telephone with simple installation (2 wire BUS without polarity).
- Up to 4 telephones/monitors per apartment (master, slave 1, slave 2 and slave 3).
- Up to 32 apartments/telephones per installation.
- Completely private conversation.
- Call volume control (maximum, medium and mute).
- Input for calls from the apartment's door.
- Call repeater output (SAR-12/24).
- Different ring tones indicate the origin of the call (door panel, intercom or apartment door).
- Lock release 1 push button .
- Intercom/lock release 2 / activation light (it requires of SAR-GB2 & SAR-12/24 modules) push button **AUX**.
- Important: The light function only with T562 telephones with V.03 or later.**
- Push button for setting ring tones (inside the telephone).
- Dip switches for setting the telephone address (call code), master/slave, end of line and activating the "doctor mode" (automatic door opening). Inside the telephone.

SYSTEM OPERATION

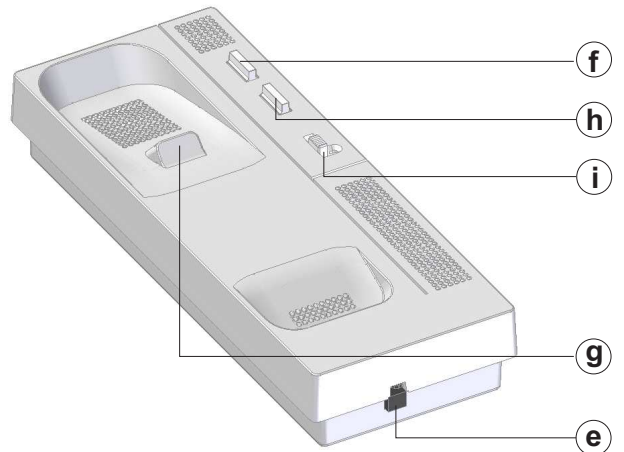
- To make a call the visitor should press the button corresponding to the desired apartment; an audible tone indicates that the call is being made and the door panel LED  will turn on. If the vocal synthesis is enabled the message "call is in progress" will be heard confirming the call is in progress. At this moment the apartment's telephone(s) receive(s) the call. During the call the visitor can correct his call by pressing a push button corresponding to a different apartment, in which case the original call is cancelled.
- The call lasts for 40 seconds. If the call is not answered within 40 seconds, the LED  will turn off and the channel will be freed.
- To establish communication, lift the handset of any telephone in the apartment. The door panel LED  will turn on. If the vocal synthesis is enabled the message "you can speak now" will be heard confirming the communication is activated.
- Communication will last for one and a half minutes or until the handset is replaced. When communication has finished the LEDs  and  will turn off and the channel will be freed. If the vocal synthesis is enabled the message "communication is finished" will be heard in the door panel confirming the communication has finished.
- To open the door, press the  push button (to open the second door, if there is one, press the **AUX**.push button) during the call or communication processes: one press will activate the lock release for five seconds and the door panel LED  will also turn on during this time. If the vocal synthesis is enabled the message "door is open" message will be heard on the door panel.
- The descriptions of the function push buttons are found on page 3.

TELEPHONE DESCRIPTION

Description:



- a. Handset.
- b. Speaker grille.
- c. Microphone hole.
- d. Subjection hole.
- e. Telephone cord connectors.



- f. Lock release push button.
- g. Hook switch.
- h. Auxiliary function push button.
- i. Volume control.

Function push buttons:

 Activates lock release 1 during the call reception and communication processes.

AUX Activates lock release 2 during the call reception and communication processes.

During standby:

- With the handset lifted it enables intercom functionality.

- With the handset on the cradle it enables light function (it requires SAR-GB2 & SAR-12/24 modules).

Important: The light function only with T562 telephones with V.03 or later.

Description of connection terminals:



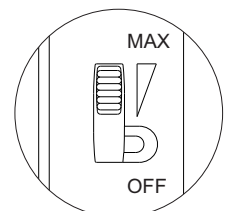
L1, L2: BUS connection.

HZ, -: Door bell push button connection.

SA, -: Call repeater connection, (SAR-12/24).
(12Vdc/50mA maximum).

Call volume control:

The telephone has a call volume control which can be set to maximum, medium or mute.



TELEPHONE DESCRIPTION

Description of dip switch and setting of telephone address (code):

Dip1 to Dip5: Set the telephone address (addresses 0 to 31).

Dip6 and Dip7: Leave OFF.

Switches set to OFF have a value of zero.
 The values of the switches set to ON are shown in the enclosed chart.
 The telephone code will be the sum of the values of the switches set to ON.

Value chart

Switch number:	1	2	3	4	5
Value ON:	1	2	4	8	16



Example: 0 + 0 + 4 + 0 + 16 = 20

Dip8 and Dip9: Set the telephone as master/slave. Dip8 and Dip9 OFF, master; Dip8 ON and Dip9 OFF, slave 1; Dip8 OFF and Dip9 ON, slave 2; Dip8 and Dip9 ON, slave 3.

Dip10: Leave OFF.

Dip11: Sets the end of line. It should always be set to OFF in installations with only telephones. In installations with monitors and telephones in the same apartment, set to ON for the telephones the BUS cable ends, and set to OFF for intermediate telephones.

Dip12: Setting this to OFF makes the volume control's OFF position function as "mute". Setting this to ON makes the volume control's OFF position function as "doctor mode".

Setting the telephone address codes (addresses 0 to 31):

Dip11: Sets the end of line. It should always be set to OFF in installations with only telephones. In installations with monitors and telephones in the same apartment, set to ON for the telephones at which the BUS cable ends, and set to OFF for intermediate telephones.

Dip11 OFF



Dip11 ON



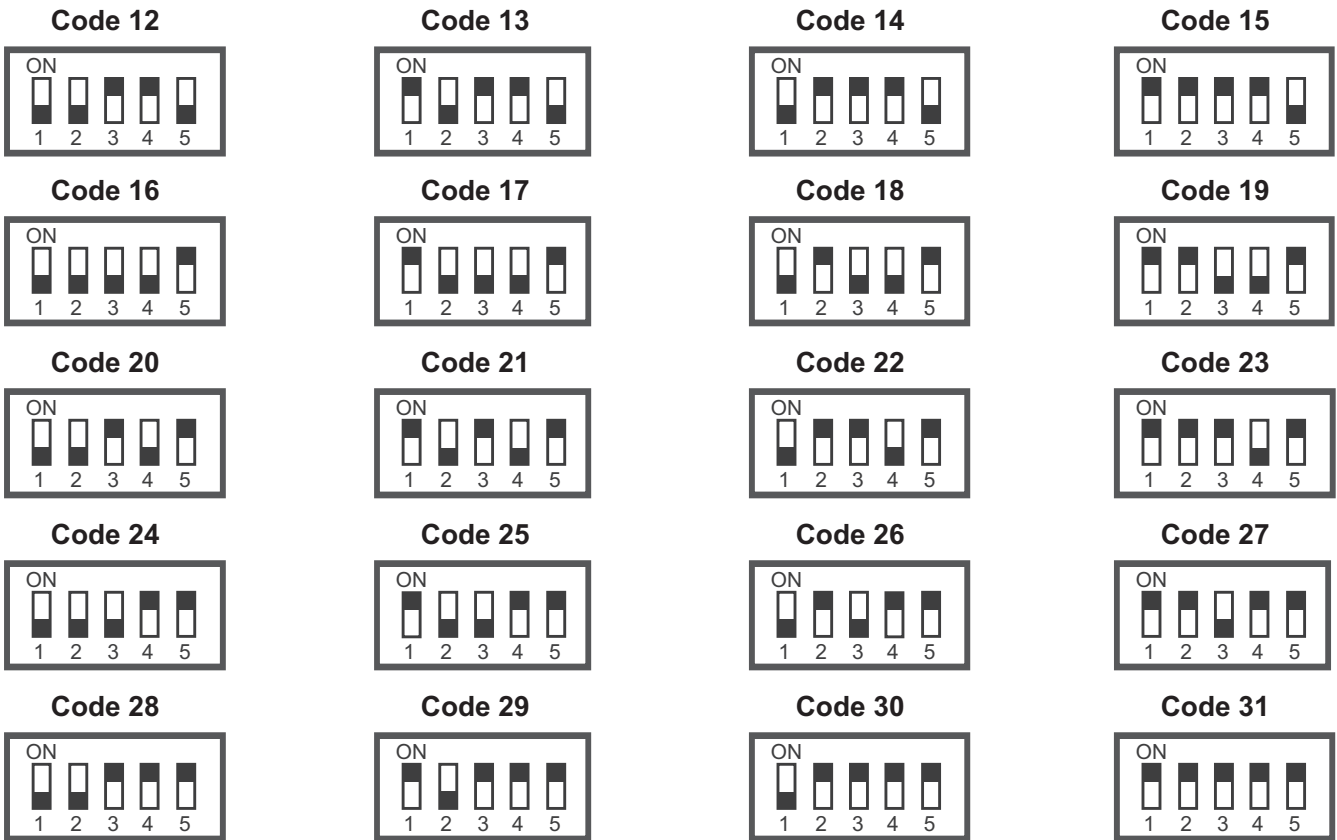
Dip1 to Dip5: Set the telephone address (addresses 0 to 31).

Code 00	Code 01	Code 02	Code 03
Code 04	Code 05	Code 06	Code 07
Code 08	Code 09	Code 10	Code 11

Continued


TELEPHONE DESCRIPTION

Continues from the previous page.



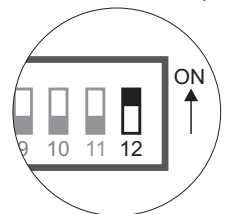
"Doctor mode" function:

Description:

The "doctor mode" function allows lock release 1 to activate automatically 3 seconds after making a call from the door panel without having to establish communication or press the  lock release push button. The call ends after 7 seconds and the channel is freed. **(Only the master telephone must be configured with "doctor mode" function).**

Enabling "doctor mode":

To enable "doctor mode" on master telephone, access the configuration dip switch located inside the telephone and set Dip 12 to ON.



Activating "doctor mode":

The telephone must be in standby mode to activate "doctor mode":

Move the volume adjustment to the OFF position.

The telephone must be in standby mode to deactivate "doctor mode":

Move the volume adjustment away from the OFF position to a medium or maximum position depending on the desired call volume.

Intercom function:

Intercom functionality between two points in the same apartment comes as standard in the T562 GB2 telephone.

The telephone must be in standby to make intercom calls.

To communicate over the intercom, lift the handset and press the **AUX** intercom push button. The apartment monitor(s) being called will emit an audible tone confirming the call is in progress.

There is a period of 40 seconds to attend to the call.

To establish communication lift the handset of the called telephone (or any other one if there is more than one slave telephone).

The communication will last for one and a half minutes or until the handset is replaced.

Activation light function:

The terminal must be in standby and with the handset on the cradle to activate the light (it requires of SAR-GB2 and SAR-12/24 modules).

To activate light function (for example "stairs light"), press the **AUX** push button.

Important: For the wire and configuration, see TSAR-GB2 and TSAR-12/24 manuals.

TELEPHONE DESCRIPTION

Setting the ring tones:

Description:

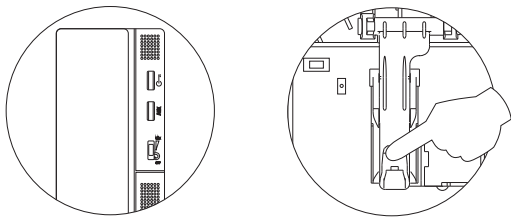
Ring tones (door panel, intercom and apartment door) can be modified by pressing the settings button located to the upper left, inside the telephone.

There are three tone groups and each group comprises three set tones. The first tone of each group that is heard during selection, corresponds to door panel calls, the second tone to intercom calls and the third tone to apartment door calls.

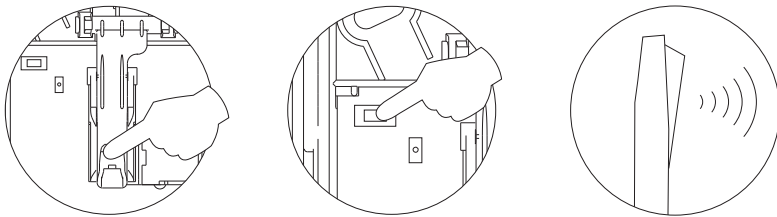
Setting and selecting the call-tone group:

The telephone must be in standby to set and select the desired tone group.

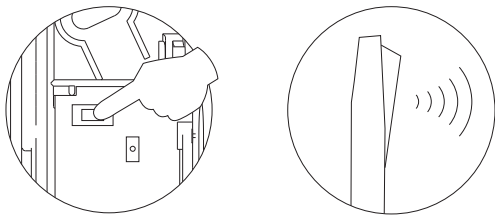
To change the ring tones open the telephone (see page 7) and press the hook switch.



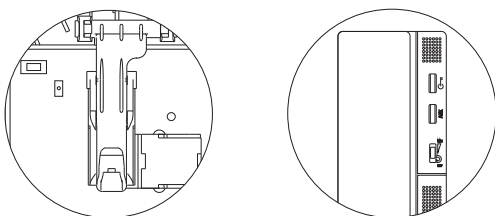
While keeping the hook switch pressed, press the settings button. The telephone's handset will emit the configured tone group.



To change the tone group, press the settings button until the desired tone group is heard; (up to 3 tone groups available, presented in carousel mode).



To save the selection, release the hook switch. Next, close the telephone and replace the handset.

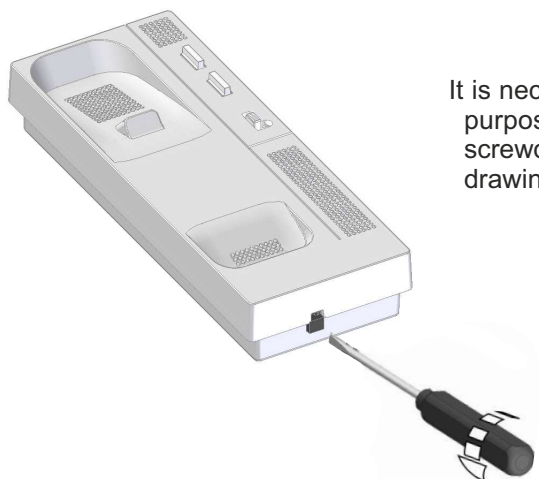


Make a call to check the telephone has been configured with the desired tone group.

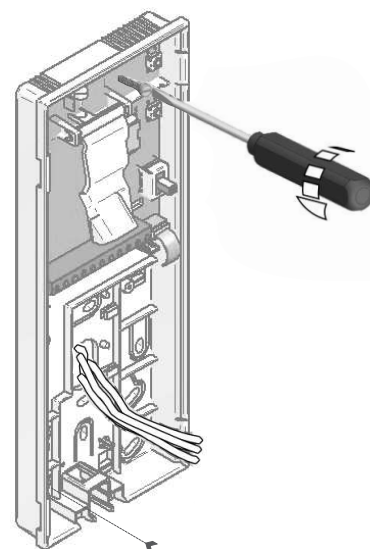


TELEPHONE INSTALLATION:**Securing the telephone to the wall:**

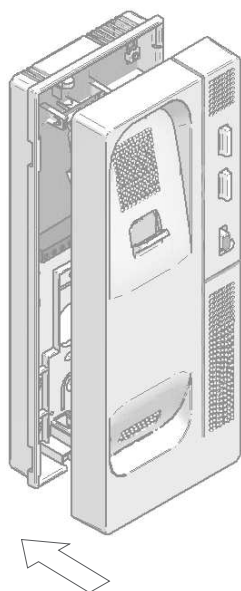
Avoid placing the telephone near sources of heat, in dusty locations or smoky environments. The telephone can be secured using an electrical embedding box or directly to the wall.



It is necessary to open the telephone for wiring and fixing purposes. To open the telephone, insert a plain screwdriver into the slots and gently lever as shown in the drawing.



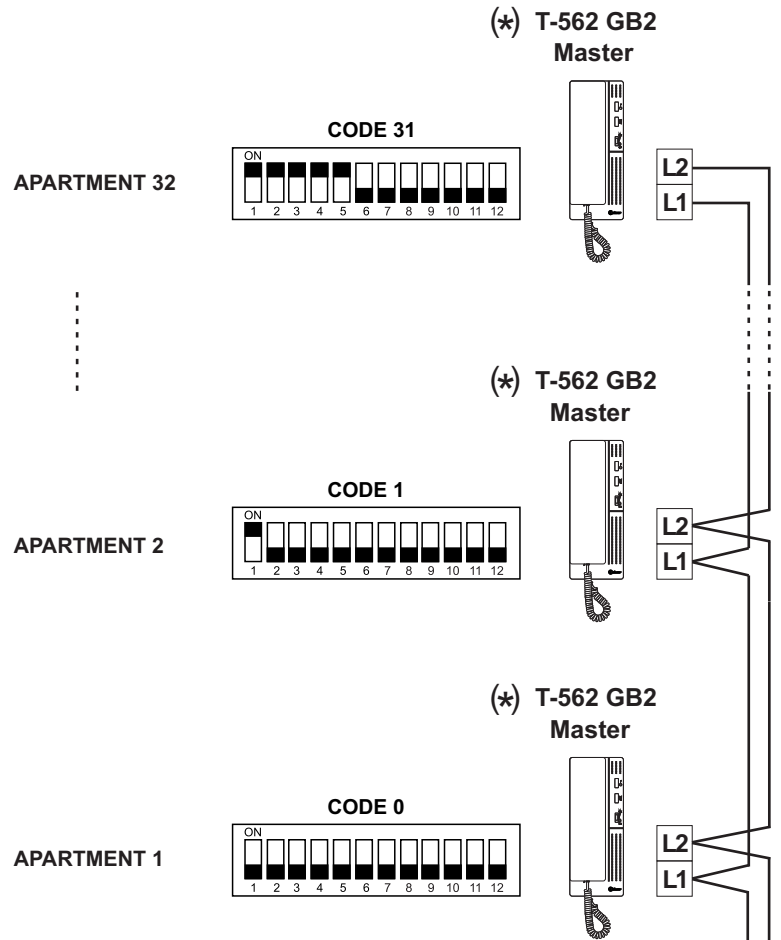
The telephone can be secured using an electrical embedding box or directly to the wall. To secure directly to the wall, drill two 6mm. holes at the specified positions. Use 6mm. wall plugs and Ø3.5 x 25mm screws.



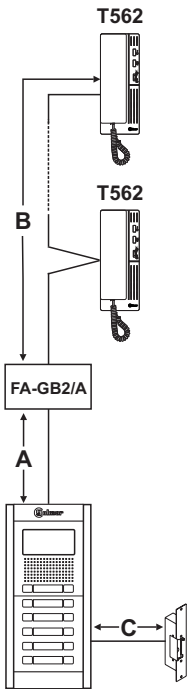
Pass the installation wires through the corresponding hole and connect them to the terminal block as per the installation diagram. Close the telephone as shown on the picture. Once the telephone is closed, connect the handset using the telephone cord and put it on the cradle.

INSTALLATION DIAGRAMS

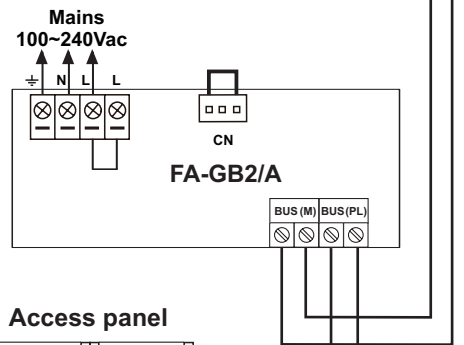
Installation for 32 apartments/T562 GB2 telephones and Golmar D.C. lock release:



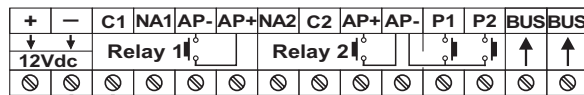
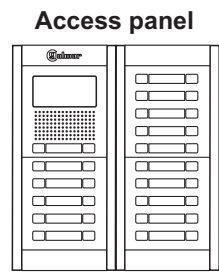
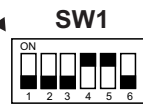
Distances and Cross-Sections:



Cable	A	B	C
Twisted pair 2x0.75mm ²	60m	60m	10m
Twisted pair 2x1mm ²	80m	80m	15m



(*) IMPORTANT: Configure the dip switch as shown in the diagram.



Lock release
max. 12 Vdc/270mA.

(*) For further information about the door panel, AC lock release connection, a second lock release or mixed installations with monitors and audio terminals, (see the "T632/GB2 user manual (code 50121878)". <https://doc.golmar.es/search/manual/50121878>

NOTES:

A series of horizontal dotted lines providing a template for handwritten notes.



golmar@golmar.es
www.golmar.es

GOLMAR S.A.
C/ Silici, 13
08940- Cornellá de Llobregat
SPAIN



Golmar se reserva el derecho a cualquier modificación sin previo aviso.
Golmar se réserve le droit de toute modification sans préavis.
Golmar reserves the right to make any modifications without prior notice.